

Pressure Mapping

Image A is a pressure map from standard GE 1.5 tesla MRI pads which are approximately 3 to 4 years old.

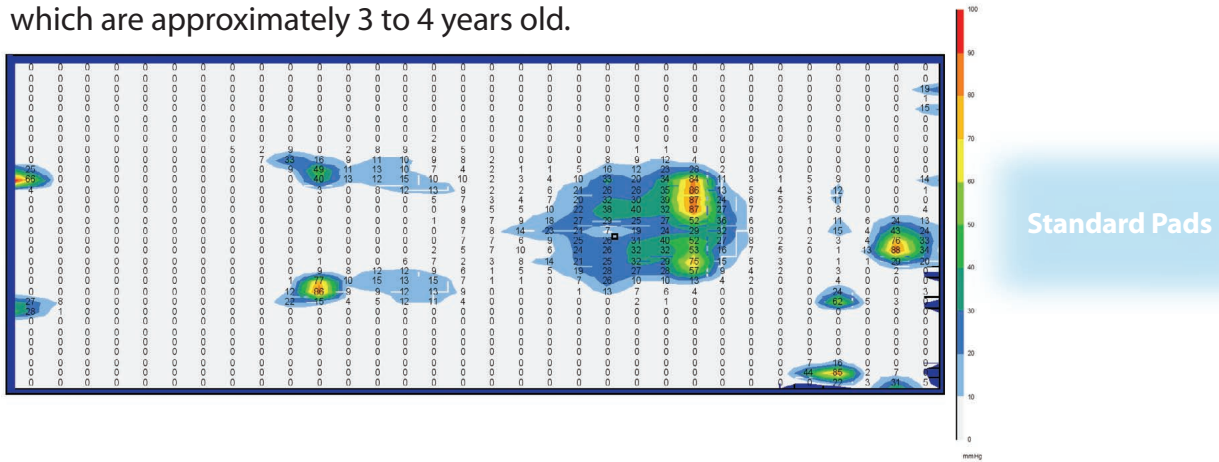
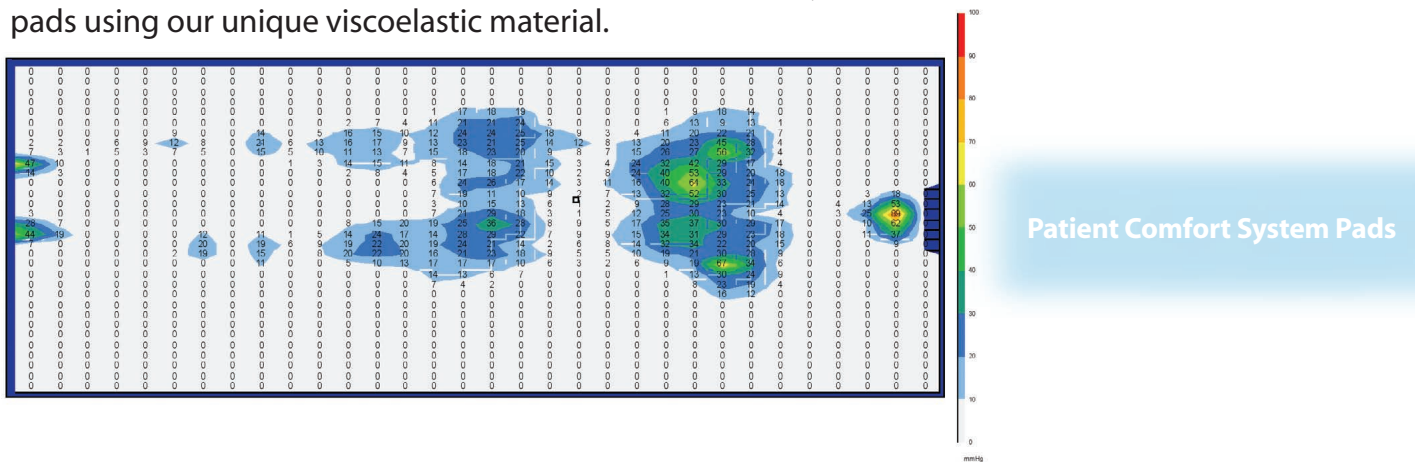


Image B is a pressure map with the new Patient Comfort Systems pads using our unique viscoelastic material.



On the Original Equipment Manufacturer (GE) pad pressure map (A), there are numerous areas of yellow and red indicating that high pressure is concentrated on small areas of the body. It is clear from these pressure maps that the majority of the weight of the body is transferred to the table through these small pressure point areas.

With the Patient Comfort System pads (B), the red areas of very high pressure points have been eliminated except for the occiput of the head. Note the extensive areas of blue and light blue, designating low pressure. This indicates that a large surface area is being used to more evenly transfer the patient's weight to the table. This occurs because the viscoelastic materials molds to the body and effectively manages pressure around these areas.